

# Brazil – Early Colonists from Glarus

By Patrick A. Wild

## Coming to Brazil

Brazil was stylized in the middle of the 19th century as the earthly paradise and land of plenty. The cultivation of coffee was regarded as a symbol of the prosperity to be gained from afar. Between 1852 and 1857, some 2000 Swiss emigrated to the province of Sao Paulo in Brazil, where they worked as coffee pickers on 25 coffee plantations spread over 25 different areas. They had been forced to emigrate by crop failures and famine. The reality in Brazil, on the other hand, was different - the paradise in their minds quickly gave way to the hard daily life on the plantations. Under pressure from the growing international criticism of slavery, since the 1840s Brazil had been trying to replace slaves with colonists who were to manage the coffee plantations as sharecroppers. Long accustomed to keeping slaves, however, the Swiss were also treated unfairly. The emigrants hardly had a chance to pay their debts and become free farmers. As a result, there was a revolt against the working and living conditions imposed on them, which escalated into a Swiss state affair and emigration to Brazil quickly dried up.

## Original Pioneer Colonist (Arrival in August 1853)

Departure Date	02.07.1853
Arrival Date	29.08.1853
Travel Time	86 days
Departure Place	Hamburg, Germany
Arrival Place	Santos, Brazil
Ship Name	Kolonist

The first known group of Glarus colonist mainly from Engi and Matt left Hamburg for Santos in July 1853. They all went to the coffee plantation farm Ibicaba after they arrived in Santos. During the trip, from the 163 passengers, 15 died from cholera.

The colonist from Glarus were the following families and persons:

<b>Altmann</b> Dietrich	Slate miner	Genealogy Matt # 46	1
01.05.1814 -	of Engi		
<b>Kubli</b> Elsbeth			1
09.04.1825	of Netstal		
Margreth	03.01.1849 -		1
<i>The family settled in the coffee plantation farm Ibicaba after they arrived in Santos.</i>			3
<b>Glarus Family Tree 04.2021: x descendants known</b>			

<b>Altmann Heinrich</b>	Slate miner	Genealogy Matt # 41	1
20.01.1815 – 18.10.1860	of Engi		
<b>Altmann Elisabeth</b>			
21.01.1816 – 21.09.1849	of Engi		
Kaspar	12.02.1840 -		1
<i>Not confirmed in the list of Kolonist but in the Paravicini contract</i>			2
<i>Heinrich and his son Kaspar settled in the coffee plantation farm Ibicaba after they arrived in Santos.</i>			
<b>Glarus Family Tree 04.2021: x descendants known</b>			

<b>Blumer Jakob</b>	Slate Miner	Genealogy Matt # 130	1
01.09.1805 -	of Engi		
<b>Elmer Barbara</b>			1
17.03.1805 -	of Matt		
Jakob	03.11.1833 -		1
Christof	25.09.1835 -		1
Barbara	16.05.1839 -		1
Jost	25.11.1842 -		1
<i>The family settled in the coffee plantation farm Ibicaba after they arrived in Santos.</i>			6
<b>Glarus Family Tree 04.2021: x descendants known</b>			

<b>Blumer Jakob</b>		Genealogy Matt # 108 (father)	1
11.03.1824 -	of Engi		
<i>He settled in the coffee plantation farm Ibicaba after he arrived in Santos.</i>			1
<b>Glarus Family Tree 06.2020: x descendants known</b>			

<b>Blumer Johann Jakob</b>	Slate Table Maker	Genealogy Matt # 123	1
25.03.1804 -	of Engi		
<b>Davatz Maria</b>		Most probably related to Thomas Davatz	1
09.06.1799 – 7.1853	of Fanas, Graubünden	Died onboard to Brazil	
Verena	28.10.1826 -	Married Fridolin Hämmerli	1
		Genealogy Matt # 126	
Anna Maria	15.11.1832 -		1
Anna	01.05.1834 -		1
Ursula	30.06.1837 -	Married Johannes Baumgartner	1
		Genealogy Matt # 193	
Johannes	29.08.1843 -		1
<i>The family settled in the coffee plantation farm Ibicaba after they arrived in Santos.</i>			7
<b>Glarus Family Tree 06.2020: x descendants known</b>			

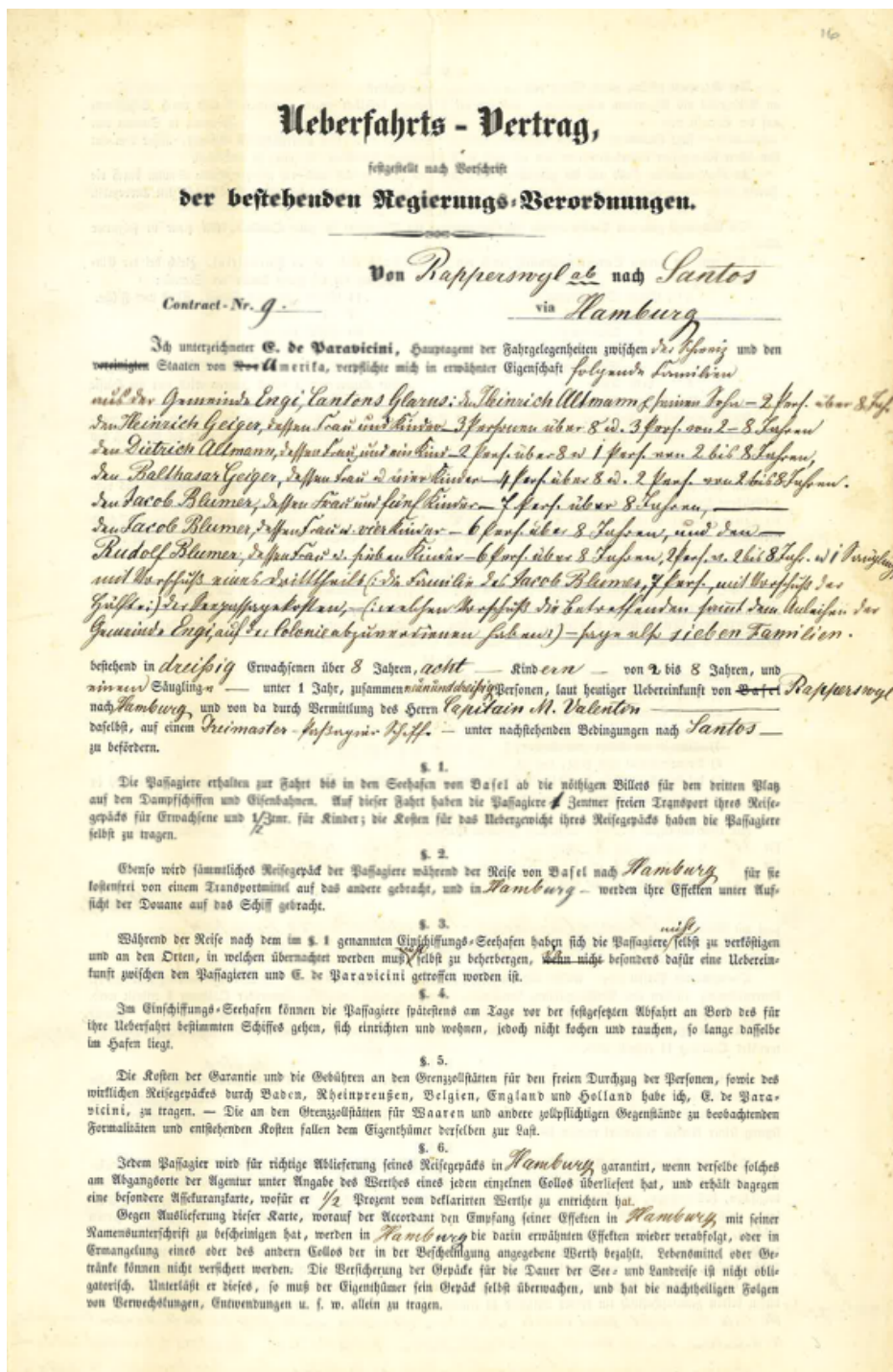
<b>Blumer Mathias</b>		Genealogy Matt # 127 (father)	1
19.08.1832 -	of Engi		
<i>He settled in the coffee plantation farm Ibicaba after he arrived in Santos. Later he married in Santa Leopoldina, Sao Paulo.</i>			1
<b>Glarus Family Tree 06.2020: x descendants known</b>			

<b>Blumer</b> Rudolf	Baker	Genealogy Matt # 153	1
21.12.1819 -	of Engi		
<b>Rhyner</b> Katharina			1
12.12.1819 -	of Elm		
Euphemia	27.01.1839 -		1
Anna Katharina	10.08.1840 -		1
Esajas	07.07.1842 -		1
Josef	25.08.1844 -	Married Magdalena Hert	1
Rudolf	17.01.1847 – 07.1853	Died onboard to Brazil	1
Beatus	03.11.1849 – 07.1853	Died onboard to Brazil	1
Jakob	04.08.1852 – 07.1853	Died onboard to Brazil	1
Valentin	1853	Born in Ibicaba	
Samuel	8.1857	Born in Ibicaba	
<i>The family settled in the coffee plantation farm Ibicaba after they arrived in Santos. No. 67 Mapa Colonia Ibicaba of Jose Sebastiao Witter</i>			<b>9</b>
<b>Glarus Family Tree 06.2020: x descendants known</b>			

<b>Geiger</b> Balthasar		Genealogy Matt # 23	1
30.11.1814 -	of Engi		
<b>Barbara</b> Hösli			1
31.03.1808 -	of Ennetbühls and Riedern		
Hilarius	28.10.1841 -		1
Anna	26.11.1843 -		1
Bertha	10.10.1846 – 7.1853	Died onboard to Brazil	1
Gustav	24.01.1849 -		1
<i>The family settled in the coffee plantation farm Ibicaba after they arrived in Santos.</i>			<b>6</b>
<b>Glarus Family Tree 06.2020: x descendants known</b>			

<b>Geiger</b> Heinrich		Genealogy Matt # 24	1
27.01.1820 – 25.12.1877	of Engi	Died in Ibicaba	
<b>Geiger</b> Rosina			1
14.07.1816 -	of Engi		
Maria	11.07.1841 -		1
Anna	25.09.1845 -		1
Leonhard	05.07.1848 – 07.1853	Died onboard to Brazil	1
Jakob	12.09.1850 – 07.1853	Died onboard to Brazil	1
Barbara	29.03.1857 -	Born in Ibicaba	
<i>The family settled in the coffee plantation farm Ibicaba after they arrived in Santos.</i>			<b>6</b>
<b>Glarus Family Tree 06.2020: x descendants known</b>			

Stauffacher Jakob		Genealogy Matt # 169	1
04.06.1802 -	of Matt		
Baumgartner Maria			1
04.01.1814 -	of Engi		
Christof	09.12.1843 -		1
Jakob	04.12.1845 -		1
Joachim	02.10.1850 -	Died probably on board	1
<i>Doesn't appear in the Paravici contract but in the list of the "Kolonist"</i>			5
<i>The family settled in the coffee plantation farm Ibicaba after they arrived in Santos.</i>			
<b>Glarus Family Tree 04.2021: x descendants known</b>			





§. 7.

Der Accordant erklärt, einen Werth von ... sage Gulden an Reisegepäck als Eigentum mitzunehmen, und hat zur Sicherung desselben gegen gänzlichen Verluß durch Schiffbruch auf der Seereise von ... nach ... eine Versicherung-Prämie von ... Prozent, in Summa von ... sage Gulden dem unterzeichneten Agenten, außer dem mit ihm schon bedungenen Ueberfahrtsgehalte und der nach §. 6 bedungenen Versicherung-Prämie, zu entrichten.

In obengenanntem Falle und bei gänzlichem Untergange des Reisegepäcks wird die obenbezeichnete Summe durch die Herren ... in ... dem Accordanten oder dessen Bevollmächtigten ausbezahlt.

§. 8.

Die Eingangs genannte Person bezieht ihre Lebensmittel zur Ueberfahrt in guter Qualität, und zwar in folgender Weise:

*Wird dieses in dem beigefügtem Voranschlagszettel des Herrn Capitain M. Valentin festgesetzt.*

Oben erhalten die Passagiere das nöthige Bett und Bettzeug, Koch-, Trink- und Speisekist. Wenn die Auswanderer das Schiffsmobiliar selbst liefern, wird ihnen dafür ... abgerechnet; sie müssen es aber bei Abschluß des Vertrages anzeigen.

§. 9.

Die Abfahrtsstage von Hamburg resp. von Basel, werden den Accordanten in Cuiusvis I, nachdem sie das vorgeschriebene Draufgeld dem unterzeichneten Agenten bezahlt haben, genau bestimmt und werden diejenigen Passagiere, welche die ganze Ueberfahrtssumme vor ihrer Abreise von Basel ab entrichtet haben, während des ohne ihre eigene Schuld verursachten Aufenthaltes, von dem Tage ihrer Ankunft an, selbst höhere Gewalt, wie Sturm und Wetter, nicht ausgenommen, für Rechnung des Kontrahirenden beherbergt und verpflegt.

§. 10.

Die Inhaber dieses Vertrages müssen spätestens zwei Tage vor der bestimmten Abfahrtszeit in angegebenen Seehafen eintreffen. Verspätungen, sowie unrichtige Angaben des Alters der Kinder machen der im §. 9 garantirten Ansprüche verlustig und verpflichten die Zuwiderhandelnden noch insbesondere zur Nachzahlung des Bestehenden bis zum vollen Ueberfahrtspreise der erwachsenen Personen.

§. 11.

- Auf dem angewiesenen Schiffe haben die oben eingeschriebenen Passagiere:
  - 1) 3/4 Maß in Zwischendeck;
  - 2) freien Transport des Reisegepäcks und der zum eigenen Gebrauch bestimmten Geräthschaften;
  - 3) Venfelle und nöthigenfalls Apotheke;
  - 4) ~~Was in der Küche zum Kochen;~~
  - 5) Brennmaterial und Licht; und
  - 6) bei der Ankunft in Amerika frei von Entrichtung des Spital- oder Armen- f. g. Keygeldes, da solches in nachstehendem Betrage inbegriffen ist.

§. 12.

Für Ueberfahrtsgehalt haben vorstehend genannte Person ... für 30 Erwachsene über 8 Jahren ... für 8 Kinder über 1 und bis zu 8 Jahren ... ein Kind unter 1 Jahr frei.

im Ganzen: 11564.  
sage mit Worten: Elftausendfunfshundertvierundsechzig Franken  
nach heutiger Uebereinkunft zu bezahlen. *Prof. ...*

§. 13.

Obengenannte Person ... welche alle Bedingungen dieses Vertrags fern ... und annahm ... Unterzeichnung desselben eine Abkloppung von ...

Die weiteren Rechte der tatsächlichen Ueberfahrtsgehalts ... der ... von ... an Herrn L. de Paravicini, unantheilhaft, an ... Engländer ...

§. 14.

Der von dem Passagier bezahlte Betrag ist für die ganze Fahrt von Basel bis ... verstanden und bleibt denselben also auch diese Ueberfahrt, sowie die richtige Verschiffung seines Reisegepäcks für solche Fälle zugesichert, wenn das betreffende Schiff durch irgend einen nicht verletzlichen Unfall (höhere Gewalt nicht ausgenommen) an der Fortsetzung seiner Abreise verhindert werden sollte.

§. 15.

Der unterzeichnete Haupt-Agent, G. de Paravicini, verpflichtet sich, in Beziehung auf alle, wegen des gegenwärtigen Vertrags zwischen ihm und dem Auswanderer entstehenden Streitigkeiten vor dem schweizerischen, Oesterr. Pabstlichen, belgischen, holländischen, englischen und andern Gerichten Recht zu geben und auf Urtheile, welche auf etwaige, im Auslande geschlossene spätere, den Bestimmungen der rubricirten Verordnungen zumwiderlaufende Verträge gegründet werden möchten, Verzicht zu leisten, sofern nicht die während der Reise, namentlich in Seehäften, etwa entstehenden Streitigkeiten durch die Vermittelung der betreffenden Gesandten oder Konsule gütlich beigelegt, oder durch ein solches zu berufendes Schiedsgericht, zu welchem von dem Unterzeichneten, G. de Paravicini, oder dessen Stellvertreter an dem betreffenden Orte, sodann von dem Auswanderer in Gegenwart des betreffenden Gesandten oder Konsuls, je ein Mitglied und von diesen beiden gemeinschaftlich ein drittes Mitglied zu ernennen ist, auf kürzerem Wege entschieden werden können.

*Annahme ...*  
*Da diese Abschrift für ... Colonisten ...*  
*...*

§. 16. Jedesmal, wenn ein Transport über 40 volle Passagiere hat, wird denselben ein besonderer, erfahrener Führer mitgegeben.

§. 17. Dieser Vertrag kann weder modifizirt, noch überhaupt durch Separatverträge entkräftet werden. Derselbe kann daher von dem Accordanten weder gekündigt, noch getrocknet, oder auf eine andere, als die darin namentlich angeführte Person übertragen werden, widrigenfalls er aller darin bedungenen Rechte und Ansprüche verlustig ist. — Wird mit Umgehung desselben ein neuer Uebersahrs-Vertrag mit einem Dritten abgeschlossen, so ist der Vertragende verpflichtet, an mich, E. de Paravicini, oder meinen Bevollmächtigten, die Hälfte des im §. 12 bedungenen Betrags als Entschädigung zu entrichten. So geschähen, doppelt ausgefertigt, von den Kontrahenten unterzeichnet und jedem Theil ein Original-Exemplar eingehändigt

Rapperswil am 16<sup>ten</sup> April 1853

Unterschrift des Auswanderers:

Für die Haupt-Agentur

Thruaus <sup>der</sup> freiwilligen Kapreuen dieser  
für den Seereise, der holl. Gewandtschaft  
von Engel, Lantons, Glogus, für Aufsalben:

E. de Paravicini

von Paravicini  
von Paravicini  
Kommunikation für den Fall, dass ein anderer Auswanderer  
auf dem Ueberfahrts-Vertrag.

**Quittung I.**

Auf nebenstehendes Uebersahrs-Geld als Draufzahlung empfangen <sup>1900<sup>fr</sup></sup>  
sage neuntausend und neunhundert Franken und wird hiermit de- Accordant- Agentur  
cordant- Agentur gleichzeitig für Ankunft und Anmeldung auf der Haupt- Agentur  
in Rapperswil <sup>spätestens</sup> auf den 11. Mai 1853 circa Uhr Aufbruch  
de- Adresse von Basel bei Mannheim auf den 14. „ „  
die Fahrt von Mannheim bei Köln auf den 15. „ „  
von Köln nach Hamburg auf den 16/17 „ „  
und von Hamburg nach Santos auf den 20. Mai 1853

festgesetzt  
Rapperswil den 16<sup>ten</sup> April 1853

Der Agent.

E. de Paravicini

**Quittung II.**

Den Restbetrag auf nebenstehendes Uebersahrs-Geld <sup>16521.20<sup>fr</sup></sup>  
sage sechstausedelshundertzwanzig Franken empfangen zu haben, auswärtig aus der Quittung  
bestehend  
Rapperswil den 16<sup>ten</sup> April 1853

Der Agent.

E. de Paravicini

**Wicht zu übersehen!**

Die vorgenannten Accordanten haben sich bei ihrer Ankunft  
in \_\_\_\_\_  
bei dem Agenten, Herrn \_\_\_\_\_  
sogleich zu melden, damit ihnen die nöthigen Billete zu ihrer Reise von  
gehörig zugestellt werden.

Die Billete von \_\_\_\_\_ nach \_\_\_\_\_ wurden dem Inhaber  
dieses Vertrages zugestellt.  
den \_\_\_\_\_ 185

Der Agent.

Die Billete von \_\_\_\_\_ wurden dem Inhaber dieses Ver-  
trages zugestellt.  
den \_\_\_\_\_ 185

Der Agent.

derwo oft leblich mittelst aufregender Unterhaltungsstoffe bewirkt zu werden pflegt. Sie sind sich nicht selten dieses Vorzugs bewußt, nachdem sie durch eigene Beobachtung in Gesellschaft einer größeren Anzahl Europäer jenes Umstandes gewahr geworden sind. So finden letztere selbst an denjenigen Richter, welche sich am willigsten ihren Anforderungen zu unterwerfen geneigt sind.

Der Brasilianer ist mäßig im Essen und Trinken; das Käser der Trunkenheit ist bei ihm höchst selten zu finden. Die Willenskraft ist in ihm wenig ausgebildet und er zieht vor, dasjenige, was ihn Anstrengung kostet, zu umgehen. Gewerbetreibende sind nachlässig und liefern meist ungenügende Arbeit. Tagelöhner arbeiten soviel, um ihr tägliches Brod zu verdienen, und geben sich um größeren Verdienst keine Mühe. Welches Feld bietet dem europäischen Arbeiter offen steht, mag dem Nachdenken eines geübten Lesers anheimgestellt sein, besonders in denjenigen Provinzen Brasiliens, wo das gemäßigste und gesunde Klima die Entwicklung einer größeren Thätigkeit gestattet.

(Der geübte Einsender obigen Artikels nennt uns als Verfasser desselben einen angesehenen Genfer, der mehrere Jahre in Bahia gewohnt hat.)

**Verzeichniß**

der sämtlichen Personen, die durch Vermittlung des Herrn E. de Paravicini seit dem 25. Juni 1852 bis heute nach den Kolonien der Gutsbesitzer in der Provinz St. Paul ausgewandert sind.

		Personen.
Vötsch, Niklaus, und Familie, Nynach, Obwalden		7
Von Klingen, Joseph, " " "		4
Vötsch, Kaspar, " " "		9
Burch, Joseph, " " "		8
Burch, Melchior, " " "		4
Jeri, Niklaus, " " "		9
Berwert, Johann, " Sarnen, " "		5
Baranbon, Pantraj, " Felsch, Graubünden		9
Schibli, Mathias, " Unterhallau, Schaffhausen		4
Schmid, Heinrich, " Dombrechikon, Zürich		5
Nitter, Karl, " Marthalen, " "		4
Kunz, Johannes, " Trübelwigen, " "		3
Himmann, Job. Jakob, " Zürich, " "		1
Schweizer, Jof. Heinrich, " " "		1
Witz, Emil, " " "		1
Verdold, Johann, " Glöwil, Obwalden		1
Murbach, Heinrich, " Gächlingen, Schaffhausen		9
Müller, Hans, " " "		9
Müller, Ulrich, " " "		7
Schweizer, Ulrich, " " "		6
Müller, Hans Jakob, " " "		6
Murbach, Kaspar, " " "		6
Müller, Johannes, " " "		6
Dagg, Jakob, " " "		7
Kautenflüger, Jakob, " " "		7
Müller, Johannes, " " "		7
Murbach, Jakob, " " "		7
Schweizer, Ulrich, " " "		6
Mädi, Georg, " " "		7
Murbach, Hans Jakob, " " "		6
Mayer, Georg, " Unterschilt " "		10

Diese 181 Personen verließen am 25. Juni 1852 mit dem Schiffe „Marba“, Kapitän Peters, von Hamburg nach Santos, wo sie nach glücklicher Fahrt wohlbehalten anlangten.

		Personen.
Geiger, Heinrich, und Familie, Enzi, Glarus		6
Geiger, Volkmar, " " "		6
Himmann, Dietrich, " " "		3
Mumer, Jakob, " " "		7
Mumer, Jakob, " " "		6
Münner, Rudolf, " " "		9
Stauffacher, Jakob, " Matt, " "		5
Muser, Melchior, " Nynach, Obwalden		2
Briner, Kaver, " Sandau, Rheinbaiern		2
Ryffel, Jakob, " Stäfa, Zürich		1

Diese 47 Personen verließen am 4. Juni 1853 auf dem Schiffe „Koloni“, Kapitän Wade, von Hamburg nach Santos. — Glückliche Ankunft.

		Personen.
Zumteller, Th. Michel, und Familie, Gratevache, Fribourg		9
Suard, Joseph, " Progen, " "		5
Sallain néo Sallain, François, " Villars St. Pierre, " "		7
Debieux, François, " Chavannes sur Rossonens		5
Dubois, François, " " "		4
Lieuard, Joseph, " Orsonnens, Fribourg		5

Uebersrag 35

		Personen.
Mandonnet, Pierre, und Familie, Chattonay, Fribourg		35
Mandonnet, François, " Torny le grand, " "		18*
Mandonnet, Jacques, " " "		5
Page, Claude, " " "		6
Sudan, François, " Estavannens, " "		5
Favre, J. Joseph, " Broc, " "		7
Bussard, Ulrich, " Gruyère, " "		7
Gachel, J. André, " " "		9
Castella, François, " " "		6
Mounet, Placide, " Villars du Bois Rogère		4
Sallain, Pierre Jacques, " Pré sur Sivirier		7
Andrey, Jacques, " Cerniat, Fribourg		6
Curat, J. Joseph, " Fiogère, " "		8
Roguin, Marguerithe, " Miudes, " "		8
Roguin, Martin, " " "		3
Gobet, François, " Rogens, " "		4
Jacquier, veuve de Pierre, " Pré sur Sivirier		8
Jorand, Pierre, " Ruc, Fribourg		11
Cottet, Gillebert, " " "		8
Comus, Joseph, " " "		6
Andrey, J. Joseph, " Cresus, " "		4
Savary, François, " Chatel, " "		5
Dumoulin, Pierre, " Attalens, " "		7
Savoy, Joseph, " " "		6
Perroud, Charles, " " "		4
Afantschegg, Claude Joseph, " Bulle, " "		8

Personen.

Uebersrag 35

18\*

5

6

5

7

7

9

6

4

7

6

8

8

3

4

8

11

8

6

4

5

7

6

8

4

8

11

9

10

4

5

7

2

6

11

9

10

6

12

10

8

5

5

7

2

6

12

10

8

5

5

10

13

9

7

6

8

1

5

7

5

3

7

8

6

7

6

8

5

7

6

2

Uebersrag 304

\*) Diese sind zwei verwandte Familien, Mandonnet et Claus, letztere

7 Personen, aus Torny le grand.

\*\*) Zwei vereinigte Familien.

The Glarner group left Switzerland June 4, 1853 and arrived in Hamburg where they have to wait until the weather conditions allowed to leave on July 2, 1853.



## Original Pioneer Colonist (Arrival in June 1854)

Departure Date	09.05.1854
Arrival Date	12.06.1854
Travel Time	27 days
Departure Place	Hamburg, Germany
Arrival Place	Santos, Brazil
Ship Name	Hamburg (steamer)

The colonist from Glarus were the following families and persons:

<b>Schlittler</b> Johannes	Carpenter	Genealogy Niederurnen # 215	1
26.09.1829 -	of Niederurnen		
<b>Marti</b> Margaretha			1
10.12.1830 - 1858	of Engi	Died in Mucuri	
Katharina	21.11.1852 - 1854	Died en route to Brazil	1
Katharina	2ca. 1858	in Mucuri	
<i>The family settled in the coffee plantation farm Ibicaba after they arrived in Santos. They later settled in Mucuri in 1857. Johannes later married the widow of Jacob Volkart, Regula, with whom he had another child. The couple later moved to the Colonia de Santa Cruz do Sul.</i>			3
<b>Glarus Family Tree 06.2020: x descendants known</b>			

<b>Schlittler</b> Heinrich			1
28.04.1835 -	of Niederurnen		
<i>He travelled together with his brother Johannes and also settled in the coffee plantation farm Ibicaba after they arrived in Santos. He later moved most probably to another sharecrop farm called Morro Azul which was owned by Joaquim F. de Camargo.</i>			3
<b>Glarus Family Tree 06.2020: x descendants known</b>			



## Original Pioneer Colonist (Arrival in June 1855)

Departure Date	20.04.1855
Arrival Date	15.06.1855
Travel Time	51 days
Departure Place	Hamburg, Germany
Arrival Place	Santos, Brazil
Ship Name	Kronprinz Ernst August

Thomas Davatz (1815-1888) was schoolmaster in Fanas, Fideris and Malans in the Swiss canton of Graubünden. In 1854 he decided to emigrate to America. His original idea was to settle in the USA. As a result of the positive official propaganda of the government he finally decided to settle in Brazil. Together with a group of compatriots from Graubünden, but also from Glarus, Aargau and other parts of Switzerland, he boarded the sailing ship "Kronprinz Ernst August" in Hamburg on April 20, 1855, with which he arrived in Santos on June 15, 1855 after a little more than 7 weeks. The group was hired by the colonization company of Senator Nicolau de Campos Vergueiro. Some of the settlers were led to the Ibicaba estate and others to the Angelica estate which both were in the state of São Paulo. Both colonies belonged to Senator Vergueiro where he had coffee grown.

The colonist from Glarus were the following families and persons:

<b>Lienhard</b> Johann Peter		Genealogy Bilten # 35	1
17.12.1812 -	of Bilten		
<b>Blumer</b> Christina	Sewer		1
22.06.1831 -	of Nidfurn		
Christina	04.06.1842		1
Dorothea	23.05.1844		1
Kaspar	25.08.1848		1
Heinrich	10.06.1857	Born in Angelica	
Johann Peter	19.03.1865	Born in Angelica	
<i>The family settled in the coffee plantation farm Angelica after they arrived in Santos.</i>			<b>5</b>
<b>Glarus Family Tree 06.2020: x descendants known</b>			

<b>Schlittler</b> Kaspar	Farmer	Genealogy Niederurnen # 144	1
10.07.1797 -	of Elm and Niederurnen		
<b>Elmer</b> Margaretha			1
13.01.1799 -	of Elm		
Pankaratus	14.03.1824 - 01.01.1887		1
Kaspar	28.04.1825 - 1858		1
Anna Barbara	19.05.1834		1
<i>The family settled in the coffee plantation farm Ibicaba after they arrived in Santos. They later settled in Mucuri in 1857.</i>			<b>5</b>
<b>Glarus Family Tree 06.2020: x descendants known</b>			

<b>Schlittler</b> Daniel	Woodturner	Genealogy Niederurnen # 208	1
06.08.1826 - 1879	of Niederurnen		
<b>Schlitter</b> Margaretha	Daughter of Kaspar Schlittler #144		1
14.12.1830 -	of Niederurnen		
Daniel	21.12.1851		1
Kaspar	11.02.1853 - 24.04.1920	Ancestor of Octavio Sampaio	1
Margaretha	25.01.1854		1
Daniel	1856	Born in Ibicaba	
Frederico	1864	Born in Mucuri	
Elisa	1864	Born in Mucuri	
<i>The family settled in the coffee plantation farm Ibicaba after they arrived in Santos. The family settled in Mucuri in 1857 and lived there for many years.</i>			5
<b>Glarus Family Tree 06.2020: x descendants known</b>			

<b>Glarner</b> Fridolin		Genealogy Luchsingen # 10	1
10.02.1822 -	of Adlenbach		
<b>Schlittler</b> Sabina	Daughter of Kaspar Schlittler #144		1
13.05.1828 -	of Niederurnen		
<i>The family settled in the coffee plantation farm Ibicaba after they arrived in Santos.</i>			2
<b>Glarus Family Tree 06.2020: x descendants known</b>			

<b>Glarner</b> Margaretha	Sister of Fridolin Glarner # 10	Genealogy Luchsingen # 5	1
10.10.1833 -	of Adlenbach		
<i>She settled in the coffee plantation farm Ibicaba after she arrived in Santos.</i>			1
<b>Glarus Family Tree 06.2020: x descendants known</b>			

<b>Disch</b> Felix		Genealogy Elm # 79	1
27.07.1824	of Elm		
<b>Eichenberger</b> Susanna			1
27.10.1816	of Reinach / Aargau		
Susanna	08.12.1850		1
<i>The family settled in the coffee plantation farm Ibicaba after they arrived in Santos.</i>			3
<b>Glarus Family Tree 06.2020: x descendants known</b>			

<b>Simmen</b> Anna		Genealogy Kerenzen # 151	1
1827	of Fideris		
Jakob Ackermann	09.06.1849	illegitim son of Peter Ackermann	1
<i>The family settled in the coffee plantation farm Ibicaba after they arrived in Santos.</i>			2
<b>Glarus Family Tree 06.2020: x descendants known</b>			

## Original Pioneer Colonist (Arrival in August 1855)

Departure Date	09.06.1855
Arrival Date	24.08.1855
Travel Time	77 days
Departure Place	Hamburg, Germany
Arrival Place	Santos, Brazil
Ship Name	America (sailing ship)

The group which set sail from Hamburg to Santos in June 1855 was the largest closed travel group of Glarner to Brazil. Most of them came from Matt and Engi. During the trip, from the 327 passengers, 10 died from cholera and 2 babies were born.

The colonist from Glarus were the following families and persons:

<b>Ackermann Peter</b>		Genealogy Kerenzen # 151	1
08.01.1821	Wallenguflen-Obstalden		
<i>His partner Anna Simmen with their son Jakob Ackermann arrived with the ship leaving Hamburg on 20.04.1855. He wanted to meet her but died in another coffee plantation farm in Amparo before she arrived at this coffee plantation farm since she was brought to Ibicaba.</i>			1
<b>Glarus Family Tree 06.2020: x descendants known</b>			

<b>Altmann Johannes</b>		Genealogy Matt # 43	1
14.11.1822 – 19.09.1899	of Matt		
<b>Baumgartner Regula</b>			
15.12.1823 – 23.11.1899	of Engi		1
Johannes (Joao)	21.07.1844 – 12.08.1889		1
Elisabeth (Luiza)	16.01.1847 – 28.08.1918		1
Fridolin (Frederico)	06.06.1849 – 15.05.1909		1
Antonio	28.09.1855 – 14.05.1912	Born in Amparo	
Francisco	1857	Born in Amparo	
Jacob	1864	Born in Amparo	
Martinho	15.05.1867	Born in Amparo	
<i>The family settled in the coffee plantation farm of Francisco Marianno Galvao in Amparo after they arrived in Santos.</i>			5
<b>Glarus Family Tree 06.2020: x descendants known</b>			

<b>Bäbler Anna</b>		Genealogy Matt # 114	1
04.08.1825 -	of Matt		
<i>She traveled with Jakob Bäbler and settled in the coffee plantation farm Boa Vista in Amparo after she arrived in Santos. She then went to Ubatuba and married Caspar Schintz from Zurich. After the riots those colons were sent to the Imperial colony of Santa Leopoldina in Espirito Santo.</i>			1
<b>Glarus Family Tree 06.2020: x descendants known</b>			

<b>Bäbler</b> Dietrich	Slate miner	Genealogy Matt # 127	1
13.05.1807 -	of Matt		
<b>Stauffacher</b> Anna	died in Matt		
26.06.1812 – 12.06.1853	of Matt		
Barbara	08.10.1832		1
Dietrich	27.06.1834	he was travelling companion of Iwan von Tschudi	1
Anna Maria	25.04.1836		1
Vincenz	31.01.1838		1
Verena	03.09.1840		1
Anna	22.05.1845		1
Euphemia	18.11.1848		1
Konrad	07.04.1853 – 08.1855	Died onboard to Brazil	1
<i>The family settled in the coffee plantation farm Boa Vista in Amparo after they arrived in Santos.</i>			9
<b>Glarus Family Tree 06.2020: x descendants known</b>			

<b>Bäbler</b> Heinrich	Machine mechanics	Genealogy Matt # 145	1
23.04.1823 -	of Matt		
<b>Schlittler</b> Anna Katharina	Textile printer		1
31.08.1817 -	of Niederurnen		
Heinrich	06.08.1846 -		1
Rosina	28.06.1849 -		1
Jakob	15.03.1852 -		1
<i>The family settled first in Ubatuba. After the riots those colons were sent 1857 to the Imperial colony of Santa Leopoldina in Espirito Santo.</i>			5
<b>Glarus Family Tree 06.2020: x descendants known</b>			

<b>Bäbler</b> Jakob		Genealogy Matt # 140	1
24.08.1816 -	of Matt		
<b>Stauffacher</b> Euphemia	died in Santa Leopoldina, Brazil		1
06.01.1820 – 24.08.1874	of Matt		
Mathias	16.10.1841 -		1
Euphemia	25.09.1843 -		1
Maria	23.01.1849 – 30.05.1856	died in Santa Leopoldina, Brazil	1
Rosina	26.07.1851 -		1
Jakob	10.06.1854 – 10.11.1855	died in Santa Leopoldina, Brazil	1
Maria	30.06.1857 -	Born in Santa Leopoldina, Brazil	1
<i>The family settled first in Ubatuba. After the riots those colons were sent 1857 to the Imperial colony of Santa Leopoldina in Espirito Santo.</i>			7
<b>Glarus Family Tree 06.2020: x descendants known</b>			



<b>Bähler Oswald</b>		Genealogy Matt # 163	1
12.05.1827 -	of Matt		
<b>Marti Anna Maria</b>			1
25.12.1834 -	of Matt		
Matheus	?	Born in Boa Vista	
<i>The family settled in the coffee plantation farm Boa Vista in Amparo after they arrived in Santos.</i>			2
<b>Glarus Family Tree 06.2020: x descendants known</b>			

<b>Bähler Vincenz</b>	Slate miner	Genealogy Matt # 129	1
16.02.1806 -	of Matt		
<b>Speich Margreth</b>			1
20.03.1804 -	of Luchsingen		
Vincenz	23.08.1834 -		1
Michael	04.01.1841 -		1
Barbara	19.02.1843 -		1
Anna	31.12.1845 -		1
<i>The family settled in the coffee plantation farm Boa Vista in Amparo after they arrived in Santos.</i>			6
<b>Glarus Family Tree 06.2020: x descendants known</b>			

<b>Baumgartner Abraham</b>	Slate miner / roofer	Genealogy Matt # 138	
19.06.1815 – 06.05.1851	of Engi	Died in Engi	
<b>Luchsinger Barbara</b>			1
29.03.1824 -	of Engi		
Maria Magdalena	07.12.1845 -		1
Barbara	23.08.1849 -		1
<i>No information where the family settled after they arrived in Santos.</i>			3
<b>Glarus Family Tree 06.2020: x descendants known</b>			

<b>Baumgartner Fridolin</b>	Farmer	Ev. Genealogy Matt # 121	1
19.07.1803 -	of Engi		
<b>Stauffacher Elsbeth</b>			
19.07.1812 -	of Matt		
<i>No information where the family settled after they arrived in Santos. Not sure whether this is the correct person.</i>			1
<b>Glarus Family Tree 06.2020: x descendants known</b>			

<b>Baumgartner Johann Christof</b>	Henchman / recruiter of a regiment	Genealogy Matt # 111	1
15.04.1795 – 23.11.1860	of Engi		
<b>Weber Elisabeth</b>			1
14.02.1801 -	of Netstal		
Rosina	26.05.1833 -	Died in Ubatuba	1
Elisabeth	19.06.1837 -	Died in Ubatuba	1
Johannes	22.10.1843 -		1
<i>The family settled first in Ubatuba. After the riots those colons were sent 1857 to the Imperial colony of Santa Leopoldina in Espirito Santo.</i>			5
<b>Glarus Family Tree 06.2020: x descendants known</b>			

<b>Baumgartner</b> Kaspar		Genealogy Matt # 136	1
31.01.1815 -	of Engi		
<b>Marti</b> Sabina			1
24.12.1816 -	of Engi		
Albrecht	16.11.1842 -		1
Martin	09.01.1844 -		1
Anna	27.01.1846 -		1
Kaspar	27.08.1849 -		1
Josef	04.07.1852 -		1
Sabina	25.03.1854 -		1
<i>The family settled in the coffee plantation farm in Angélica.</i>			<b>8</b>
<b>Glarus Family Tree 06.2020: x descendants known</b>			

<b>Baumgartner</b> (Marx) Markus		Genealogy Matt # 118	1
02.05.1802 -	of Engi		
<b>Blumer</b> Maria			1
07.10.1810 -	of Engi		
Peter	08.02.1838 -		1
Gabriel	04.03.1842 -		1
Markus	22.02.1849 -		1
Fridolin	01.08.1850 -		1
<i>The family settled in the coffee plantation farm Boa Vista in Amparo after they arrived in Santos.</i>			<b>6</b>
<b>Glarus Family Tree 06.2020: x descendants known</b>			

<b>Baumgartner</b> Peter	Slate miner	Genealogy Matt # 119	1
02.04.1797 -	of Matt		
<b>Luchsinger</b> Susanna			1
02.03.1806 -	of Matt		
Jost	08.05.1833 -	Married Barbara Marti Genealogy Matt # 217	2
Johannes	22.10.1835 -	Married Ursula Blumer <b>Ancestor of Ana Campos</b>	1
Peter	02.11.1840 – 8.1855	Died onbard to Brazil	1
Adam	20.02.1843 -	Married Brandina Hensel <b>Ancestor of Marcia Nogueira</b>	1
<i>The family settled in the coffee plantation farm Boa Vista in Amparo after they arrived in Santos.</i>			<b>7</b>
<b>Glarus Family Tree 10.2020: 110 descendants known</b>			

<b>Baumgartner</b> Rudolf	Cooper master	Genealogy Matt # 91	
31.10.1787 – 23.12.1835	of Matt	Died in Matt	
<b>Hefti</b> Anna Rosina			1
22.02.1797 -	of Luchsingen		
Anna Barbara	03.05.1829 -		1
Johann Melchior	18.07.1831 -		1
Johannes	15.07.1836 -		1
<i>The family settled first in Ubatuba, then in Getubà<sup>1</sup> and 1857 in Mucuri. In 1857, after the dissolution of the Getubà farm, the families (5) that lived there were moved away. Anna Rosina Baumgartner went together with her children to the Mucuri colony in Minas Gerais. This colony was not a crop farm and was owned by T. B. Ottoni. They could have better opportunity, but the colons coming in 1857 stayed near the river and got sick of malaria. The Getubà colony had lots of problems and some members of the Baumgartner and the Marti's families came back to Rio at 1858. The others probably died there.</i>			<b>4</b>
<b>Glarus Family Tree 06.2020: x descendants known</b>			

<b>Blumer</b> Fridolin	Slate miner	Genealogy Matt # 162	1
07.06.1812 -	of Engi		
<b>Baumgartner</b> Elisabeth			1
01.10.1818 -	of Engi		
Barbara	16.09.1843 -		1
Johannes	29.10.1845 -		1
Maria Magdalena	22.09.1848 -		1
Peter	15.10.1854 -		1
<i>The family settled in the coffee plantation farm in Ibicaba.</i>			<b>6</b>
<b>Glarus Family Tree 06.2020: x descendants known</b>			

<b>Blumer</b> Fridolin	Slate miner	Genealogy Matt # 126	1
25.11.1789 -	of Engi		
<b>Altmann</b> Maria			1
13.04.1802 -	of Engi		
Barbara	09.10.1834 -		1
Johannes	01.10.1839 -		1
Verena	27.04.1845 -		1
<i>The family settled in the coffee plantation farm in Ibicaba.</i>			<b>10</b>
<b>Glarus Family Tree 06.2020: x descendants known</b>			

<sup>1</sup> Marília Jordan: Getuba or Getubá (and not Gituba or Jituba as it was written in Mucuri's documents). The farm was at 45 km from Ubatuba and 30km from São Sebastião. Nowadays the land is part of Caraguatatuba's suburb.

<b>Blumer</b> Fridolin		Genealogy Matt # 176	1
17.09.1827 -	of Engi	Son of Fridolin Blumer #126	
<b>Marti</b> Euphemia			1
15.11.1829 – 04.01.1891	of Engi		
Maria	21.03.1851 -		1
Jakob	09.05.1858 -	Born in Amparo	
Fridolin	27.11.1861 -	Born in Amparo	
Heinrich	26.06.1864 -	Born in Amparo	
<i>The family settled most probably in the coffee plantation farm Boa Vista in Amparo after they arrived in Santos.</i>			<b>3</b>
<b>Glarus Family Tree 06.2020: x descendants known</b>			

<b>Blumer</b> Jakob	Slate miner	Genealogy Matt # 149	1
10.05.1812 – 30.03.1890	of Engi	Returned back to Matt	
<b>Wohlwend</b> Barbara			1
19.01.1820 – 06.09.1885	of Engi		
Peter	19.8.1841 -		1
Jakob	30.09.1843 -		1
Mathias	02.02.1845 -		1
Barbara	24.12.1846 -		1
Anna	01.07.1849 -		1
Walter	20.03.1853 -		1
Kaspar	19.01.1856 -	Born in Campinas	
Elisabeth	25.10.1862 -	Born in Campinas	
Maria	06.05.1865 -	Born in Campinas	
<i>The family settled in the coffee plantation farm in Ibicaba.</i>			<b>8</b>
<b>Glarus Family Tree 06.2020: x descendants known</b>			

<b>Blumer</b> Johannes		Genealogy Matt # 173	1
01.01.1828 -	of Engi		
<b>Zweifel</b> Maria Magdalena	Weaver		1
01.02.1827 -	of Linthal		
<i>The family settled in the coffee plantation farm in Angélica.</i>			<b>2</b>
<b>Glarus Family Tree 06.2020: x descendants known</b>			

<b>Blumer</b> Johannes	Farmer	Genealogy Matt # 148	1
27.05.1802 – 25.09.1878	of Engi	Returned back to Glarus	
<b>Marti</b> Katharina			1
03.06.1811 – 26.12.1868	of Matt		
Fridolin	02.01.1836 – 09.08.1896	Genealogy Matt # 319 Married to Agnes Zwicki	1
Anna	05.08.1840 -		1
Johannes	14.09.1847 -		1
Johann Christof	06.12.1849 -		1
<i>The family settled in the coffee plantation farm Boa Vista in Amparo after they arrived in Santos.</i>			<b>6</b>
<b>Glarus Family Tree 06.2020: x descendants known</b>			



<b>Blumer Josef</b>	Slate miner	Genealogy Matt # 131	1
29.07.1804 – 19.03.1858	of Engi		
<b>Scherer Anna Elisabeth</b>			1
28.08.1824 -	of Lichtensteig		
<b>Josef (José)</b>	24.11.1837 – 08.06.1916	Genealogy Matt # 450	1
Matheus	08.05.1845 -		1
<i>The family settled in the coffee plantation farm Boa Vista in Amparo after they arrived in Santos.</i>			<b>4</b>
<b>Glarus Family Tree 06.2020: x descendants known</b>			

<b>Blumer Matthias</b>	Slate miner	Genealogy Matt # 160	1
01.01.1820 – 28.10.1879	of Engi	Returned home 1864	
<b>Marti Anna</b>	Pen maker		1
28.03.1813 – 20.06.1890	of Engi	Died in US	
Konrad	13.11.1842 – 1855	On the journey to Brazil	1
Barbara	10.01.1845 – 09.04.1913	Returned home 1864	1
Elisabeth	23.09.1846 – 05.04.1916	Died in Osseo, Minnesota	1
Anna	10.06.1848 – 22.05.1924	Died in Alexandria, Minnesota	1
Mathias	10.02.1850 -	Died in US	1
Katharina	20.04.1851 – 08.1933	Died in US	1
Verena	22.07.1852 – 11.09.1869		1
Jakob	09.01.1854 – 24.04.1919	Died in Osseo, Minnesota	1
<i>The family settled in the coffee plantation farm in Soledade (owner Hercule Florence) near Campinas.</i>			<b>10</b>
<b>Glarus Family Tree 06.2020: x descendants known</b>			

<b>Blumer Samuel</b>	Slate miner	Genealogy Matt # 155	1
26.07.1814 -	of Engi		
<b>Hämmerli Barbara</b>			1
07.08.1814 -	of Engi		
Anna	01.04.1838 -		1
Ursula	01.09.1839 -		1
Samuel	28.10.1840 -		1
Mathias	29.05.1844 -		1
Barbara	17.11.1849 -		1
<i>The family settled in the coffee plantation farm in Angélica.</i>			<b>9</b>
<b>Glarus Family Tree 06.2020: x descendants known</b>			

<b>Bräm Fridolin</b>	Slate miner, roofer	Genealogy Matt # 19	1
10.01.1802 -	of Engi		
<b>Zentner Katharina</b>			
03.12.1805 – 24.05.1855	of Elm	Died in Engi	
Ursula	28.07.1839		1
<i>The family settled in the coffee plantation farm in Angélica.</i>			<b>2</b>
<b>Glarus Family Tree 06.2020: x descendants known</b>			

<b>Geiger Kaspar</b>		Genealogy Matt # 20	1
30.10.1828 -	of Engi		
<i>He settled in the coffee plantation farm in Ibicaba.</i>			1
<b>Glarus Family Tree 06.2020: x descendants known</b>			

<b>Hämmerli Fridolin</b>		Genealogy Matt # 99	1
08.11.1819 -	of Engi		
<b>Luchsinger Anna</b>			1
11.02.1816 -	of Engi		
Fridolin (Frederico) Harmelin	09.06.1843 – 26.09.1928	Genealogy Matt # 134	1
Elsbeth Harmelin	18.07.1845 -		1
Waldburg Harmelin	30.04.1849 -		1
Hilarius Harmelin	06.09.1851 -		1
Anna Harmelin	26.08.1853		
Joao Harmerlin	1856	Born in Amparo Ancestor of Marisilda Tescaroli	
<i>The family settled in the coffee plantation farm Boa Vista in Amparo after they arrived in Santos.</i>			6
<b>Glarus Family Tree 06.2020: x descendants known</b>			

<b>Hämmerli Fridolin</b>		Genealogy Matt # 68	1
10.08.1834 -	of Engi		
<i>He settled in the coffee plantation farm in Angélica.</i>			1
<b>Glarus Family Tree 06.2020: x descendants known</b>			

<b>Hämmerli Josef</b>	Slate miner	Genealogy Matt # 98	1
21.12.1802 -	of Engi		
<b>Elmer Euphemia</b>			1
27.02.1812 -	of Matt		
Jost	26.02.1839 -		1
Jakob	13.02.1841 -		1
<i>The family settled first in Ubatuba. After the riots those colons were sent 1857 to the Imperial colony of Santa Leopoldina in Espirito Santo.</i>			4
<b>Glarus Family Tree 06.2020: x descendants known</b>			

<b>Kubli Oswald</b>	Farmer	Genealogy Elm # 15	1
17.01.1798 -	of Elm		
<b>Bäbler Magdalena</b>			
27.12.1797 – 26.01.1853	of Matt	Died in Matt	
Rudolf	14.03.1839 -		1
<i>The family settled first in Ubatuba. After the riots those colons were sent 1857 to the Imperial colony of Santa Leopoldina in Espirito Santo.</i>			2
<b>Glarus Family Tree 06.2020: x descendants known</b>			

<b>Luchsinger</b> Hilarius	Carpenter	Genealogy Matt # 53	1
08.05.1808 -	of Engi		
<b>Blumer</b> Barbara			1
21.10.1824 – 16.04.1883	of Engi		
Hilarius	16.02.1849 – 09.09.1917	Genealogy Matt # 116 <i>Ancestors of Altayr José Mattedi</i>	1
Mathias	17.06.1850 -		1
Jakob	28.08.1854 - 08.1855	Died onboard to Brazil	1
<i>The family settled first in Ubatuba. After the riots those colons were sent 1857 to the Imperial colony of Santa Leopoldina in Espirito Santo.</i>			5
<b>Glarus Family Tree 06.2021: 200 descendants known</b>			

<b>Luchsinger</b> Hilarius	Textile Printer	Genealogy Matt # 56	1
25.11.1825 -	of Engi		
<b>Marti</b> Susanna			1
01.10.1831 -	of Elm		
Maria	07.12.1850 -		1
Adam	28.01.1852 -		1
Mathäus	04.05.1853 -		1
<i>One baby was born onboard to Brazil. The family settled first in Ubatuba. After the riots those colons were sent 1857 to the Imperial colony of Santa Leopoldina in Espirito Santo.</i>			5
<b>Glarus Family Tree 06.2020: x descendants known</b>			

<b>Marti</b> David		Genealogy Matt # 287	1
20.05.1825 -	of Engi		
<b>Altmann</b> Katharina			
15.08.1827 – 21.09.1853	of Engi	Died in Engi	
Katharina	18.08.1853 -		1
<i>David Marti settled first in Boa Vista. After the riot in Ibicaba he settled in Mucuri.</i>			2
<b>Glarus Family Tree 06.2020: x descendants known</b>			

<b>Marti</b> Dorothea		Genealogy Matt # 145	1
26.03.1807 -	of Engi	Sister of Gregor Marti # 240	
<i>She settled most probably together with her brother in the coffee plantation farm Boa Vista in Amparo after they arrived in Santos.</i>			1
<b>Glarus Family Tree 06.2020: x descendants known</b>			

<b>Marti</b> Fridolin		Genealogy Matt # 224	1
03.07.1803 -	of Engi	Brother of Gregor Marti # 240	
<b>Marti</b> Anna			1
18.12.1811 -	of Engi		
Fridolin	31.12.1832 -		1
Barbara	01.01.1834 -	Married to Jost Baumgartner Genealogy Matt # 217	1
Katharina	28.09.1835 -	Married to Fridolin Hämmerli Genealogy Matt # 134	1
Anna	06.02.1838 -	Died on board to Brazil	1
Mathäus	30.07.1839 -		1
Elsbeth	06.11.1843 -		1
Verena	01.04.1846 -		1
Johannes	12.01.1848 -	Married to Maria Ursula Bataglia <b>Ancestor of Meri Lolita Martins</b>	1
<i>The family settled in the coffee plantation farm Boa Vista in Amparo after they arrived in Santos.</i>			<b>10</b>
<b>Glarus Family Tree 06.2020: 45 descendants known</b>			

<b>Marti</b> Gregor		Genealogy Matt # 240	1
09.06.1811 – 14.09.1877	of Engi		
<b>Marti</b> Euphemia			1
13.04.1819 – 12.06.1880	of Matt		
Barbara	21.05.1837 -		1
Martha	02.08.1842 -		1
Christof	01.09.1852 -		1
Anna	12.06.1847 -		1
<i>The family settled in the coffee plantation farm Boa Vista in Amparo after they arrived in Santos.</i>			<b>6</b>
<b>Glarus Family Tree 06.2020: x descendants known</b>			

<b>Marti</b> Jakob		Genealogy Matt # 310	1
09.12.1804 -	of Matt		
<b>Bäbler</b> Katharina			1
18.07.1820 -	of Matt		
<i>The family settled most probably in the coffee plantation farm Boa Vista in Amparo after they arrived in Santos.</i>			<b>2</b>
<b>Glarus Family Tree 06.2020: x descendants known</b>			



<b>Marti</b> Jakob		Genealogy Matt # 261	1
02.10.1819 -	of Engi		
<b>Marti</b> Anna			1
06.09.1823 -	of Engi		
Jakob	15.02.1844 -		1
Niklaus	13.10.1852 -		1
Samuel Eduard	17.09.1853 -		1
Anna	Ca. 1860	Born in Brazil	
Johannes	05.01.1863	Born in Brazil	
Barbara	21.03.1868	Born in Brazil	
<i>No information where he settled after he arrived in Santos.</i>			<b>5</b>
<b>Glarus Family Tree 06.2020: x descendants known</b>			

<b>Marti</b> Jakob		Genealogy Matt # 292	1
28.09.1823 -	of Engi		
<b>Hämmerli</b> Susanna			1
02.02.1832 -	of Engi		
Euphemia	07.04.1852 -		1
Samuel	13.11.1853 -		1
<i>The family settled in the coffee plantation farm Boa Vista in Amparo after they arrived in Santos.</i>			<b>4</b>
<b>Glarus Family Tree 06.2020: x descendants known</b>			

<b>Marti</b> Johannes		Genealogy Matt # 279	1
11.11.1824 -	of Engi		
<b>Marti</b> Salome			1
03.05.1828 – 03.06.1866	of Engi		
Jakob	11.08.1850 -		1
Mathias	19.06.1853		1
Magdalena	23.05.1866	Born in Campinas	
<i>The family settled in Campinas after they arrived in Santos.</i>			<b>4</b>
<b>Glarus Family Tree 06.2020: x descendants known</b>			

<b>Marti</b> Mathias	Slate miner	Genealogy Matt # 167	1
07.11.1787 -	of Engi	Father of Johannes Marti # 279	
<i>He settled together with his son's family in Campinas after they arrived in Santos.</i>			<b>1</b>
<b>Glarus Family Tree 06.2020: x descendants known</b>			

<b>Marti</b> Regula		Genealogy Matt # 313	1
04.10.1828 – 04.1856	of Engi		
Regula	12.08.1853 – 07.1855	En route to Brazil	1
<i>No information where he settled after he arrived in Santos.</i>			<b>2</b>
<b>Glarus Family Tree 06.2020: x descendants known</b>			

<b>Marti</b> Rudolf		Genealogy Matt # 212	
16.12.1807 – 27.08.1847	of Engi	Died in Engi	
<b>Hämmerli</b> Rosina			1
10.01.1812 -	of Engi		
Rudolf	24.10.1832 -		1
Anna Maria	28.04.1837 – 22.05.1905	Emigrated to Wisconsin and married to Heinrich Wiederkehr	1
Anna Barbara	10.02.1839 -		1
Fridolin	30.07.1840 -		1
Leonhard	25.03.1842 -		1
Peter	07.09.1844 -		1
Anna	12.06.1847 -		1
Luchsinger Anna	11.10.1838 -	Step-daughter of Rosina	1
Luchsinger Rosina	30.07.1852 -	Daughter of her second husband	1
<i>The family settled first in Ubatuba, then in Getubà and 1857 in Mucuri. In 1857, after the dissolution of the Getubà farm, the families (5) that lived there were moved away. Rosina Marti-Müller went together with her children to the Mucuri colony in Minas Gerais. This colony was not a crop farm and was owned by T. B. Ottoni. They could have better opportunity, but the colons coming in 1857 stayed near the river and got sick of malaria. The Getubà colony had lots of problems and some members of the Baumgartner and the Marti's families came back to Rio at 1858. The others probably died there.</i>			<b>10</b>
<b>Glarus Family Tree 06.2020: x descendants known</b>			

<b>Norder</b> Fridolin		Genealogy Matt # 10	1
10.7.1808 – 05.1856	of Engi		
<b>Marti</b> Verena			1
26.09.1806 -	of Engi		
Fridolin	06.01.1829 -	Married to Ursula Hämmerli Genealogy Matt 13	2
Johannes	07.02.1831 -	Married to Magdalena Jenny Genealogy Matt 14	2
Jakob	16.06.1836 -		1
Anna	02.05.1839 -		1
Ursula	19.02.1842 -		1
Verena	04.01.1846 -		1
Mathias	18.10.1851 -		1
<i>The family settled in the coffee plantation farm de Francisco Marianno Galvo in Amparo after they arrived in Santos.</i>			<b>11</b>
<b>Glarus Family Tree 06.2020: x descendants known</b>			

<b>Speich</b> Heinrich	Cooper	Genealogy Matt # 68	1
13.09.1812 -	of Matt		
<b>Baumgartner</b> Margreth			1
27.01.1811 -	of Engi	Died in Ubatuba	
Barbara	02.08.1838 -	Died in Ubatuba	1
Heinrich	24.09.1840 -	Died in Ubatuba	1
Samuel	03.02.1843 -	Died in Ubatuba	1
Maria	22.05.1845 -	Stayed in Rio de Janeiro beginning of 1857	1
Katharina	05.08.1851 -	Stayed in Rio de Janeiro beginning of 1857	1
<i>The family settled first in Ubatuba and then 1857 in the coffee plantation farm Santa Leopoldina in Sao Paulo.</i>			<b>7</b>
<b>Glarus Family Tree 06.2020: x descendants known</b>			

<b>Stauffacher</b> Joachim		Genealogy Matt # 179	1
23.04.1826 -	of Matt		
<b>Luchsinger</b> Salome			1
01.05.1829 -	of Engi		
Anna	09.08.1849 -	Married Frederico Altheman	1
Adam (Adao)	04.09.1850 -	Married Pulcheria Hämmerli	1
Elsbeth	03.11.1851 -		1
Salome	25.09.1853 -		1
Rudolf	25.01.1855 - 08.1855	Died on board to Brazil	1
<i>The family settled in the coffee plantation farm Boa Vista in Amparo after they arrived in Santos.</i>			<b>7</b>
<b>Glarus Family Tree 02.2022: 55 descendants known</b>			

<b>Stauffacher</b> Johannes (Joao)	Pen maker	Genealogy Matt # 157	1
31.07.1817 – 1871	of Matt		
<b>Marti</b> Barbara			1
03.01.1808 – 02.01.1873	of Engi		
Agatha	02.12.1837 -		1
Fridolin	13.06.1839 -		1
Katharina	27.02.1842 -		1
Johannes (Joao)	21.06.1845 -		1
<i>The family settled in the coffee plantation farm Boa Vista in Amparo after they arrived in Santos.</i>			<b>6</b>
<b>Glarus Family Tree 06.2020: x descendants known</b>			

<b>Stauffacher</b> Niklaus	Slate miner	Genealogy Matt # 132	1
29.05.1796 – 08.05.1885	of Matt	Father of Niklaus Matt # 165	
<b>Weber</b> Elsbeth			1
01.07.1789 -	of Mollis		
<i>The family settled in the coffee plantation farm Boa Vista in Amparo after they arrived in Santos.</i>			<b>2</b>
<b>Glarus Family Tree 02.2022: 24 descendants known</b>			

<b>Stauffacher</b> Niklaus	Son of Niklaus Stauffer # 132	Genealogy Matt # 165	1
30.01.1824 – 08.05.1885	of Matt	Son of Niklaus Matt # 132	
<b>Marti</b> Martha			1
02.02.1825 – 05.05.1856	of Matt		
Niklaus	20.09.1842 -		1
Martha	12.05.1844 -	Ancestor of Caroline Andreo	1
Elsbeth	19.01.1847 -		1
Ursula	26.10.1849 -		1
Johann Christof (Joao)	01.09.1853 -		1
Francisco	?	Born in Boa Vista	
<i>The family settled in the coffee plantation farm Boa Vista in Amparo after they arrived in Santos.</i>			<b>7</b>
<b>Glarus Family Tree 02.2022: 24 descendants known</b>			



## Original Pioneer Colonist (Arrival in December 1855)

Departure Date	09.10.1855
Arrival Date	12.12.1855
Travel Time	65 days
Departure Place	Hamburg, Germany
Arrival Place	Rio de Janeiro, Brazil
Ship Name	Franciska

This boat left Hamburg in October 9, 1855 and arrived at Rio de Janeiro on December 12, 1855. During the trip from the 212 passengers, 24 died from cholera. There was only one family from Glarus. All the passengers went to Ubatuba (arrival December 18, 1855) where they worked at the crop farms of Nova Olinda and Pereque-Mirim, both owned by Francisco José de Castro. They all moved to Santa Leopoldina in 1857.

The colonist from Glarus was the following families and persons:

<b>Landolt</b> Kaspar Josef Fridolin	Umbrella maker, Factory Worker	Genealogy Näfels # 194	1
05.09.1824 -	of Näfels		
<b>Oswald</b> Maria Anna Katharina			1
05.11.1826 -	of Niederurnen		
Maria Mathilda	07.07.1853	Died on board to Brazil	1
Child	11.1855	Born on board and died 25.07.1856 in Ubatuba	
<i>The family settled in the coffee plantation farm in Ubatuba and later moved in 1857 to Santa Leopoldina.</i>			<b>3</b>
<b>Glarus Family Tree 06.2020: x descendants known</b>			